

# LE DIAMANT



## TECHNICAL SPECIFICATIONS HYDRO-QUÉBEC AUDITORIUM

SEPTEMBER 2023

## GENERAL INFORMATION

### Main Entrance and Box Office

966 Saint-Jean Street  
Québec, Canada  
G1R 1R5

### Stage Door

785 Des Glacis Street  
Québec, Canada  
G1R 3R1

## CONTACT

### Telephone

Administration 418-692-0330  
Box Office 418-692-5353

Production Manager	Louise Roussel <a href="mailto:lroussel@lediamant.ca">lroussel@lediamant.ca</a>
Technical Director	Simon Cloutier <a href="mailto:scloutier@lediamant.ca">scloutier@lediamant.ca</a>
Production Assistant	Cassandra Duguay <a href="mailto:cduguay@lediamant.ca">cduguay@lediamant.ca</a>
Assistant Technical Director	François Genest <a href="mailto:fgenest@lediamant.ca">fgenest@lediamant.ca</a>

## ARRIVAL AND SECURITY

Invited companies must review the emergency plan and safety rules of Le Diamant.

A controlled access system is in place in the theatre. A Diamant employee will explain the details once you arrive.

All workers must wear the adequate personal protection equipment (helmet, steel shoes and harness) in accordance with the safety measures.

Invited companies must declare all elements or activities that may require a special permit (pyrotechnics, armory or other). If needed, the companies may participate in the risk analysis to give context to the way these elements are used in the production.

## TECHNICAL TEAM

All activities and equipment are under the supervision of the in-house technical team and the technical direction of Le Diamant.

All staff needed for technical work will be provided by Le Diamant, in accordance with the established agreement.



## LOADING DOCK (see appendix 1)

961 Richelieu Street, Québec G1R 3R1.

All equipment must travel through a corridor connecting the loading dock to the main building in order to reach the freight elevator.

### No object can exceed either one of these measurements

Maximum height	2,6m		8'-10"
Maximum width	1,5m		5'
Maximum length	9m		30'

## DOOR A

Accessed by Richelieu Street, Level S2.

All equipment must travel through a smaller freight elevator between basements S2 and S1.

### Dimensions of the lift between Levels S2 and S1

Height		2,4m	8'
Width		1,2m	5'-9"
Length		3,3m	10'-8"
Maximum capacity		1 588 kg	3 500 lbs

## DOOR B

Loading dock with garage door giving access to level S1

Height		2,7m	9'
Width		2,4m	8'
Height of dock		1,3m	51"

**This access is situated under the adjacent theater.**

**All truck maneuvers can block circulation on the street.**

**All deliveries must be coordinated at least 7 days prior.**

## MAIN FREIGHT ELEVATOR (see appendix 2)

For all equipment, the stage must be accessed by the main freight elevator. The opening of the elevator is level with the proscenium, on stage left.

Height		2,7m	9'
Width		2,5m	8'-5"
Length*		6,7m	21'-8"
Maximum capacity		7,5 tonnes	16 500 lbs

**\*Longer stage elements may access the stage using the orchestra pit elevator.**



## CONFIGURATION AND CAPACITY

### PROSCENIUM CONFIGURATION (see appendix 3.1)

The proscenium configuration uses two sections of bleachers: One set of bleachers on the orchestra pit with a 15% incline and one set of retractable bleachers with a 42% incline for the main section.

It is possible to reduce the seating by using only the main bleachers to make space for either an orchestra pit or a small stage of a maximum height of 840mm (33 inches) by using the orchestra pit elevator.

### SEATING CAPACITY

<b>Maximum capacity</b>	<b>642 seats</b>
-------------------------	------------------

<b>Sections</b>	<b>Rows</b>	<b>Nb seats</b>
Main Bleachers	A à P	419 seats
Back bleacher (Balcony)	Q	28 seats
Orchestra pit bleachers	AA à GG	195 seats
Wheelchair spaces *	A ou Q	4 (max 16)

\*One wheelchair space requires the space of 2 regular seats.

A sound booth is available in the middle of the last row (row Q), where approximately a dozen seats are removed.

### BLACK BOX CONFIGURATION (voir appendix 3.2)

The stage and the front of house are on the same level, which is the ground floor of the building (same level as the main entrance on Saint-Jean street).

The front of house, without bleachers, can extend the stage space and transform into various configurations.

The capacity of the space must be analysed according to the set up plan of the event.

In any case, the capacity of the Black box configuration cannot exceed 905 persons, including all artists and staff.



## DIMENSIONS AND INFORMATION (see appendix 4)

### STAGE

#### Proscenium arch, steel, painted black

Width		17,4m	57'-1"
Height		10,34m	34'

#### Measurement from the zero point

Width of proscenium arch	0,5m	18"
Apron (downstage)	1,5m	59"
Upstage wall	13,39m	43'-11"
Last lineset	12,57m	40'-11"

#### Measurement from the center line

Lateral lineset (automated)	10,6m	34'-9"
Fly gallery	11,75m	38'-7"
Stage Left Wall	15,54m	50'-11"
Stage Right Wall (counterweight rigging system)	12,9m	42'-4"

#### Clearance

Under the fly system	19,78m	64'-11"
Under the grid	20,7m	67'-11"
Under the catwalks	8,9m	29'-2"
Downstage left backstage	4,8m	15'-9"
Upstage left backstage	3,4m	11'-2"

#### Floor

Resilient wood stage with a Mondo type rubber with 3mm thickness

It is not permitted to screw into the floor.

Weight capacity	7 kPa	150lbs/sq.ft.
Height of the stage from first row (AA)	84cm	33"

#### ORCHESTRA PIT

The stage elevator, without rows AA to GG, can descend to create an orchestra pit for up to 50 or 60 musicians, depending on the instruments.

The orchestra pit is covered by a safety net.

The conductor's podium must be built with risers.

Width of the pit	17,5m	57'-4"
Width beneath the stage	12m	39'
Depth at pit level	9,8m	32'
Height between pit and stage	3,16m	10'-4"



## DIMENSIONS AND INFORMATION (continued)

### FRONT OF HOUSE

#### Dimensions

Between lateral galleries	18m	59'
Width of the galleries (min)	0,68m	27"
Length	23m	75'-3"

#### Clearance

Under the grid	10,36m	34'
Under the hanging beams	12,8m	42'
Under the lateral galleries	3,6m	12'

#### Floor

Resilient wood floor covered with hardwood flooring painted black.

It is not permitted to screw into the floor.

Weight capacity	7 kPa	150lbs/p2
-----------------	-------	-----------

### BOOTHES

The booths are on the 3rd level, just over the entryways of the venue.

2 booths for follow spots, with a full pane of glass.

3 booths with sliding doors and a table with adjustable height.

Each booth is air conditioned and can hold a video projector inside.

### TRAPS AND RIGGING ANCHORS

There are no traps beneath the floor.

Cable troughs are integrated in the resilient floor, where threaded anchors are evenly placed.

- FRONT OF HOUSE: 10 anchors in the floor, evenly placed in the cables troughs on each side.

Safe working load (SWL)	1800 lbs = 8kN All directions
-------------------------	-------------------------------

- ORHCESTRA PIT: 6 anchors in the floor, evenly placed in the cables troughs on each side.

Safe working load (SWL)	1800 lbs = 8kN All directions
-------------------------	-------------------------------

- FRONT OF HOUSE WALLS: 16 vertical anchors, evenly placed on the acoustic walls on each side of the venue.

Safe working load (SWL)	1800 lbs = 8kN All directions
-------------------------	-------------------------------

- STAGE: 13 anchors in the floor, evenly placed in the cable troughs on each side and behind the stage.

Safe working load (SWL)	1800 lbs = 8kN All directions
-------------------------	-------------------------------

Possibility of using the Yoke 28-P204-021L swivel (4) type anchors **ON STAGE ONLY.**

Safe working load (SWL)	5000 lbs = 26kN All directions
-------------------------	--------------------------------

**\*\*NOTE THAT THE YOKE TYPE ANCHORS CANNOT BE USED ON THE ANCHORS ON THE ORCHESTRA PIT OR ON THE WALLS\*\***

These safe working loads are calculated with a static charge. If the anchor is used with a dynamic charge, a specific factor should be applied depending on the discipline, the weight of the acrobat and their equipment.

The factors applied need to be approved by the technical director of the theater.



## HANGING

### STAGE

#### Counterweight underhung rigging system

49 double battens, single purchase counterweight.

Operated from stage right or the fly gallery if needed.

Capacity		17,4m	900 kg	2 000 lbs
Point load		10,34m	150 kg	330 lbs
Length			19,5m	64'
Extension (30 units total)			0,9m	36"
Space between		17,4m	0,25m	10"
Maximum		10,34m	19,78m	64'-11"
Minimum Height			1,2m	4'

2 upstage to downstage single speed automated double battens per side to close off each wing

Programmable height

Capacity		900 kg	2 000 lbs
Point load		150 kg	330 lbs
Speed		0,7 m/s	20'/min
Length		5,65m	18'-6"
Maximum height		18,28m	60'
Minimum height		1,2m	4'

#### Grid

The grid floor is available for the installation of any additional equipment.

A 1T motorised hoist is installed in an access well, stage right between batten 44 and 45.

Height under the hanging beams		23,5m	77'
Distributed capacity		15 T	33 000 lbs
Maximum point load		2 T	4 400 lbs

#### Lateral walls

A pin rail is positioned on the wall in both of the wings (stage right and left)

Height of the rail		3m	10'
Maximum point load		225 kg	500 lbs

#### Fly gallery

The fly gallery is on all three sides of the stage.

A pin rail is available on stage right and stage left.

Height of the rail		10,5m	34'-3"
Maximum distributed capacity		4 500 kg	10 000 lbs



## HANGING (continued)

### FRONT OF HOUSE (see appendix 5)

#### Front of house grid

The technical ceiling of the front of house is a grid, with the same specifications as the grid onstage.

The grid has 3 openings to hang lighting or other technical equipment. FOH 1 to 3.

The ceiling of the grid has 7 hanging beams that can accommodate hoists.

The grid floor is available for the installation of any additional equipment.

It is possible to hoist material up to the grid at FOH 2.

Clearance on the grid	2m	78"
Total distributed capacity	30 T	70 000 lbs
Maximum point load	2 T	4 400 lbs

#### Galleries and passageways

Projectors and other equipment can be hung within the arches on each gallery.

Threaded anchors are evenly placed on the galleries.

Fixation		3/4"-10 UNC
Safe working load		1800 lbs - All directions

#### Booth wall

A hanging pipe is available behind Row Q.

## RIGGING

### HANGING STRUCTURE

Lighting truss, black, 8' / 2,4m (Arcofab TTD 1212-S)	12
Lighting flat-truss, black, 8' / 2,4m (Arcofab TTD LA12-096S)	12
Lighting flat-truss, black, 4' / 1,2m (Arcofab TTD LA12-048S)	12

### MOTORISED CHAIN HOISTS

Motorised chain hoists, single speed.

Hoist D8+, 500 kg	4
Hoist D8+, 1000 kg	4
Control kit for hoist (4 channels)	2

### SLINGS AND HARDWARE

The equipment and accessories necessary for rigging are available on demand.

Slings, shackles, Steelflex, beam clamps and beams.





## DRAPERY (see appendix 6)

All of the curtains are made of black velvet.

### 1x House curtain (black, 100% fullness)

Opening (guillotine or traveller), maneuver at stage right, batten 3.

Width	20m	67'-0"
Height	8,9m	29'-6"

### 7x Borders (no fullness)

Width	19,5m	64'
Height	3m	10'

### 1x Border (no fullness)

Width	18,2m	60'
Height	3m	10'

### 6x Pairs of legs (no fullness)

Width	3,6m	12'
Height	8,9m	29'-6"

### 1x Full stage black traveller (50% fullness)

On rails, maneuver at stage right, batten 23.

Width	20m	67'
Height	8,9m	29'-6"

### 1x Full stage black backdrop (no fullness) - upstage

Width	19,5m	64'
Height	8,9m	29'-6"

### 4x Upstage to Downstage Black curtain (per side)

On rails, under the fly gallery.

Width	3,3m	11'
Height	8,8m	29'

### 1x Black scrim

Width	19,5m	64'
Height	8,9m	29'-6"

### 1x Cyclorama, grey PVC

Width	19,5m	64"
Height	8,9m	29'-6"

## FRONT OF HOUSE ACOUSTIC TREATMENT

The gallery and passageway walls on each side are covered in 100% fullness black velvet.



# ELECTRICAL

## AVAILABLE CONNECTORS

### Lighting

Upstage left:

Camlock 3Ø 120/208V	400 A
---------------------	-------

### Video

Upstage right:

Cam lock 3Ø MALTI 120/208 V	200 A
-----------------------------	-------

### Sound

Upstage right:

Cam lock 3Ø MALTI 120/208 V	200 A
-----------------------------	-------

### Rigging

Technical ceiling, front of house:

Camlock 3Ø 120/208V	200 A
---------------------	-------

Twist lock 3Ø 208V 50A (HBL-CS8369)	4x
-------------------------------------	----

Stage grid:

Twist lock 3Ø 208V 50A (HBL-CS8369)	2x
-------------------------------------	----

Upstage left:

Twist lock 3Ø 208V 30A	1x
------------------------	----

## CONNECTOR TYPES AND CAPACITY

### Service, tools and utility

#### Type

120V 15A	Nema	5-15
----------	------	------

### Sound and video

#### Type

120V 15A, MALTI	Nema	5-15
-----------------	------	------

120/208V 30A, MALTI	Nema	L14-30
---------------------	------	--------

Fixed power supply	CEE 32A	1Ø 6h
--------------------	---------	-------

### Lighting

#### Type

Dimmable 120V 20A	Nema	L5-20
-------------------	------	-------

6 circuits, 120V 20A	SOCAPEX	4/19
----------------------	---------	------

Fixed power supply	CEE 32A	1Ø 6h
--------------------	---------	-------

### Booths

120V 15A, MALTI	Nema	5-15
-----------------	------	------

120/208V 30A, MALTI	Nema	L14-30
---------------------	------	--------

208V 30A	CEE 32A	1Ø 6h
----------	---------	-------



## LIGHTING

### PROTOCOLS

XLR-5 (DMX) connectors and Ether-Con can be used for lighting control.  
The dimmers and house light controls are in the universe DMX-A

DMX, ACN and Artnet protocols can be used and distributed throughout the theatre.

3 Concentrator / Converter	ETC RSN 4 out
2 Opto-splitter (2x 5 sorties)	LumiSplit 2.10

### DIMMERS

All lighting circuits can be configured individually according to the use and charge (dimmer, relay or non-dim).

Quantity	332
Tension	120 V
Power	2,4 kW

### CIRCUITS

Lighting circuits are distributed by SOCAPEX 4/19 multicables and Nema L5-20 plugs.

Circuit distribution:

Orchestra pit	6
Stage Left	18
Stage Right	18
Stage box, Stage left	60
Stage box, Stage right	60
Front of house, left	10
Front of house, right	10
Back of audience, booth level	6

Circuits in house, FOH and bridges can be redistributed with multicables.☒

FOH left gallery	24
FOH right gallery	24
FOH 1	24
FOH 2	24
FOH 3	24

### CONSOLE

MA Lighting system

- GrandMA3 compact XT console
- Remote control on digital tablet



## LIGHTING (continued)

### PROJECTORS

#### Leko

ETC S4 750W (body only)	72
10 deg lens	12
19 deg lens	12
26 deg lens	36
36 deg lens	24
50 deg lens	12
ETC S4 Zoom 15/30 deg 750W	18
ETC S4 Zoom 25/50 deg 750W	18
Iris for S4	24
Gobo holder type B for S4	36

#### Fresnel

Robert Juliat 8" 1Kw	36
----------------------	----

#### Par

ETC 750W (+ various lenses )	36
ETC PARNeI 750W	12
Chauvet Colorado 2 Solo LED	12

#### Cyclorama lights

Elation SEVEN Batten 72	9
-------------------------	---

### ACCESSORIES

DMX Gateway, ETC RSN 4 ports	1
------------------------------	---

#### Smoke machine

MDG Atmosphere DMX	1
DMX Ventilator	1
MDG Minimax DMX	1

### HANGING

Lighting ladders (Altman 264)	4
Floor base	12
Floor plate	12
6ft/ 1,83m pipe	6
8ft/ 2,44m pipe	8
12ft/ 3,66m pipe	4
Side arm 12 inches/ 0,3m	24
Side arm 36 inches/ 0,91m	6
Sandbag (15 lbs/6,8 kg)	24



## LIGHTING (continued)

### CABLES

Y-connector (two-fer)	36
Socapex Splay - L5-20	20
Socapex Splay - 5-15	2
Adaptor CEE 32A 1Ø @ 2x L6-15	2

## SOUND

### MAIN SOUND SYSTEM

In its basic configuration, the sound system is made to offer a complete and surround sound in the proscenium stage configuration.

The speakers and amplification channels are distributed as follows :

<b>Left, right</b>	4 channels	Line array D&B, 7 x 10AL per side	
<b>Centre</b>	2 channels	Line array D&B, 7 x T10	
<b>Sub</b>	4 channels	D&B V-sub	4
<b>Floor level</b>	2 channels	D&B E12D	2
<b>Apron</b>	2 channels	D&B E5	6
<b>Surround</b>	12 channels	D&B E8	12
<b>Onstage effects</b>	2 channels	D&B E12	2
<b>Stage monitors</b>	2 channels	D&B M6	2

### SIGNAL DISTRIBUTION

The digital processor manages the switch and signal control.

#### QSC510i

Available ins:

32x	Dante
6x (12 channels)	AES3
16 channels	AES3 (Cinéma)*

\*DCI configuration only

All speaker links are Speakon NL4.



## SOUND (continued)

### CONSOLE AND CONTROL

#### Yamaha CL3

26 faders/ 8 bus/ 2 master

Maximum capacity: 64 mono + 8 stereo

Dante network

1 x Yamaha Rio 3224 D2 extension bay

Fixed in the AV room

\*Adjustable table for in house position

#### Mobile extension bay (patch box)

Yamaha Rio 3224 D2 extension bay	1
Yamaha Rio 1608 D2 extension bay	1

#### CD players

Denon DN-701C	2
---------------	---

#### Reference monitor

Neuwman KH 120AG	2
------------------	---

### MICROPHONES

#### Wired microphones

Shure, SM58	4
Shure, SM57	6
Shure, Beta52	1
AKG, C414 XLS	2
AKG, PCC-160	2
Sennheiser, e965	2
Sennheiser, e902	1
Sennheiser, e904	4
Sennheiser, e906	2
Sennheiser, e835-S	3
Audio-technica, ATM-35	4
Rode, NT5-MP	4

#### Wireless microphones

4 channel receiver, Lectrosonics VRM2WBL (fixed)	1
Wireless handheld microphone, Shure Beta 58A, Lectrosonics Hha	2
Belt transmitter (belt pack) Lectrosonics SSM	6
DPA 4066 Beige headset	4
Lavalier microphone DPA 4060, Beige	6



## SOUND (continued)

### Accessories

Direct box, active and passive (DI)	18
Multiple adaptors	

### Microphone stands

Articulated microphone stand, black	18
Small articulated microphone stand, black	8
Articulated microphone stand on wheels, black	4
Table microphone stand, black	4
Straight microphone stand, round base, black	6

## CABLES

### Speaker

Speakon NL4, multiple lengths

### Microphones

XLR3, multiple lengths	
12 channel snake, XLR-3 input to V37	3
Veam37 to 12 male XLR-3 splay	1
Extension Veam37 length 7,5m/25 ft	4
Multicable 4 XLR3, length 30m/ 100 ft	1
Multicable 16 XLR3, length 15m/50 ft	2
Sub-Snake 12/4, XLR3, length 15m/50 ft	1

## VIDEO

### SIGNAL DISTRIBUTION

Video connections are on level 3 near the booths

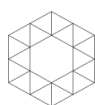
The signal may be distributed throughout the theatre, through the various wall plates

### FORMAT, CABLES AND CONNECTORS

3GSDI	BNC
Cat6e Network	EtherCon
Single mode fiber optic	OpticalCon (LC Duplex)

### CONVERTERS

Recorder/encoder, AJA Helo	1
----------------------------	---



## VIDEO (continued)

### Video signal processing, ensemble AJA OG

Signal booster SDI, 1 in / 4 out	4
SDI to HDMI Converter	1
HDMI to SDI (12G) Converter	1
SDI Converter/ Single Mode Fiber Optic	1
Encoder / decoder audio, 3G SDI, 8 channels	1

### MOBILE EQUIPMENT

Theatrixx XVV Converter

HDMI @ SDI	2
SDI @ HDMI	2

### PROJECTOR\*

\*Additional fees may be applied.

Epson laser Pro L1755UNL WUXGA 3LCD, 15 000 lumens	1
--	---

### Lenses

Short throw (ELPLU03)	0.48-0.57 :1
Short Throw (ELPLW05)	0.77-1.07 :1
Long Throw	1.8-2.35 :1
Standard Zoom Lens (ELPLM10)	0.42-3.71 :1

### Projection screen

Draper focal point, front facing, black frame, 16'X9'	1
---	---

## CINEMA CONFIGURATION

### Screen and legs:

Strong Vista retractable, Matte white, gain of 1

Black velvet legs

### Projection format

Flat (standard DCI)	38'-6"/11,73m length	22'/6,7m height
Scope	38'-6"/11,73m length	17'/5,18m height
Projection distance	82'9"/25m to the booth	

\*A 20K lumen projector is required to get the DCI standard @ 7.5 fc nominal.

The 7.1 audio configuration is calibrated according to the DCI standard.

The AES3 connection is through 2 CAT6e cables.





## COMMUNICATION - PROGRAM SOUND AND VIDEO

### CALL SYSTEM AND PAGING

The paging system covers the dressing rooms, the green room and the staircase leading to the stage. Synchronised clocks are also in the green room, the backstage and the booth.

### Video Return

1 Infrared camera	Marschall HD-SDI
1 Remote controlled camera	Panasonic HD-SDI
1 Infrared emitter	

Video monitors	Green room
	Production office
	On stage, left and right
	In the foyer, before entering the

### INTERCOM

#### Wired Intercom

ClearCom, HelixNet series

2 channel beltpacks, ClearCom BP-4x	8
Intercom headset, ClearCom CC400	8
Table base, ClearCom HKB-2X	1

#### Wireless Intercom

Riedel, digital 6 channels

Riedel BPK 1006 beltpacks	8
Intercom headset, ClearCom CC300	8
NSA-002 Interface	1



## EQUIPMENT AND TOOLS

### RISERS

Risers 4' x 4'/1,21m x 1,21m	18
Risers 4' x '8/1,21m x 2,44m	28
Riser 2' x 4'/0,61m x 1,21m	on demand
Handrails 4'/1,21m	22
Legs of various heights (8", 16", 32", 48")	

### STAIRS

Mobile stage stairs (840mm/ 33 po)
8 inch steps

### LADDERS

4'/1,22m ladder	1
5'/1,50m ladder	1
6'/1,83m ladder	2
10'/3m ladder	1
12'/3,66m ladder	2

### VERTICAL MAST LIFT

Genie AWP 40s	1
---------------	---

### TOOLS

A set of tools is available for technical work.

## COSTUME MAINTENANCE

A laundry room is available next to the green room, in the dressing room area.

The following equipment is available:

2 washers
2 dryers
1 steamer
1 iron + ironing board
1 worktable
1 sewing machine



## **DRESSING ROOMS (see appendix 7)**

The dressing rooms are in the basement, beneath the stage. They include a green room, a production office, a laundry room and dressing rooms to accommodate 28 people.

A staircase leads to stage right.

**There is no direct access between the dressing rooms and stage left.**

A crossover must be planned upstage for any crossing between stage right and left.

The orchestra pit is also accessible through the green room.

### **Dressing room A**

For 1 person, or makeup, with private toilet and shower.

### **Dressing room B**

For 2 people

### **Dressing room C (accessible)**

For 2 people

### **Dressing room D**

For 4 people.

### **Dressing room E**

For 4 people.

### **Dressing room F**

For 5 or 8 people

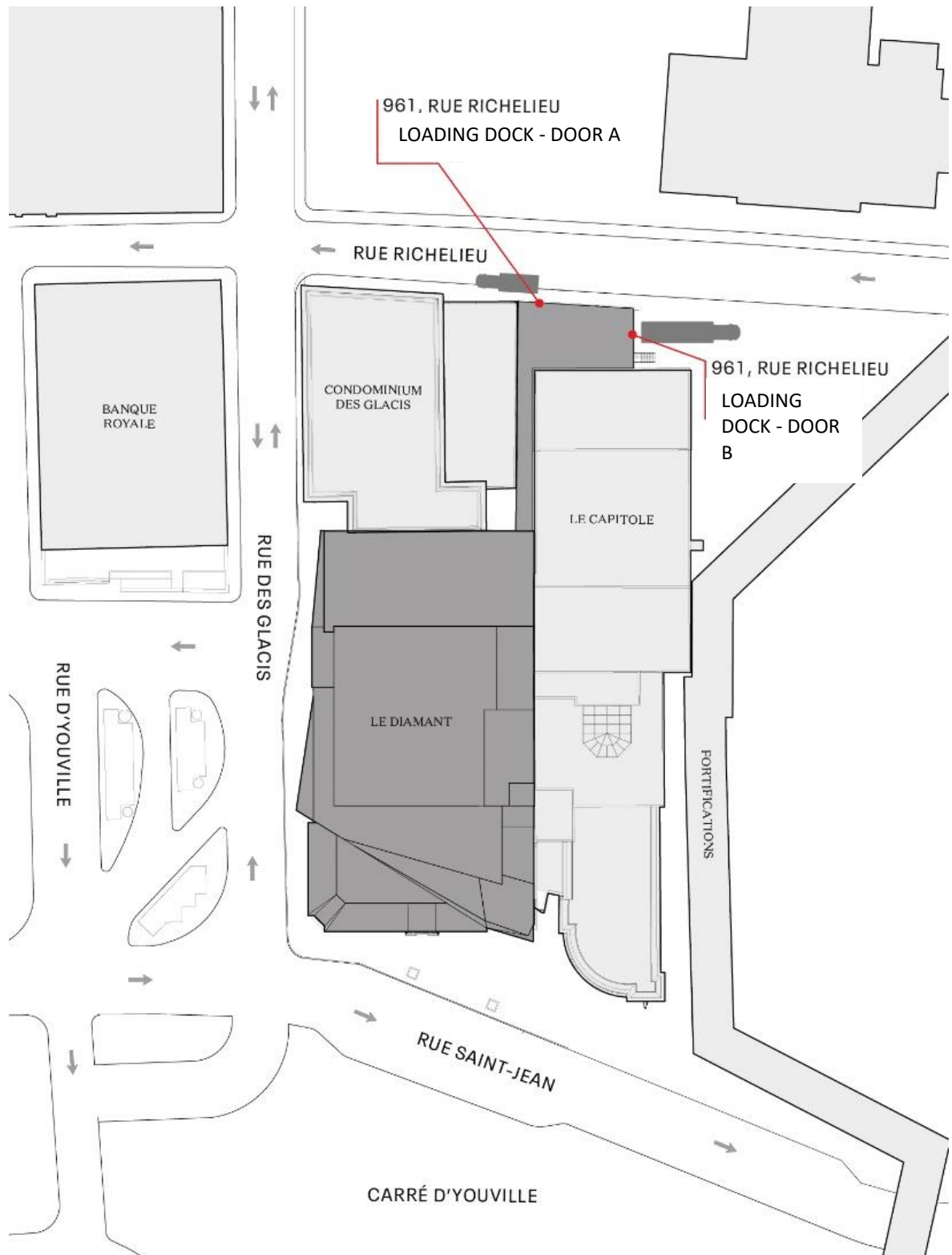
### **Dressing room G**

For 4 or 7 people with toilet and shower.

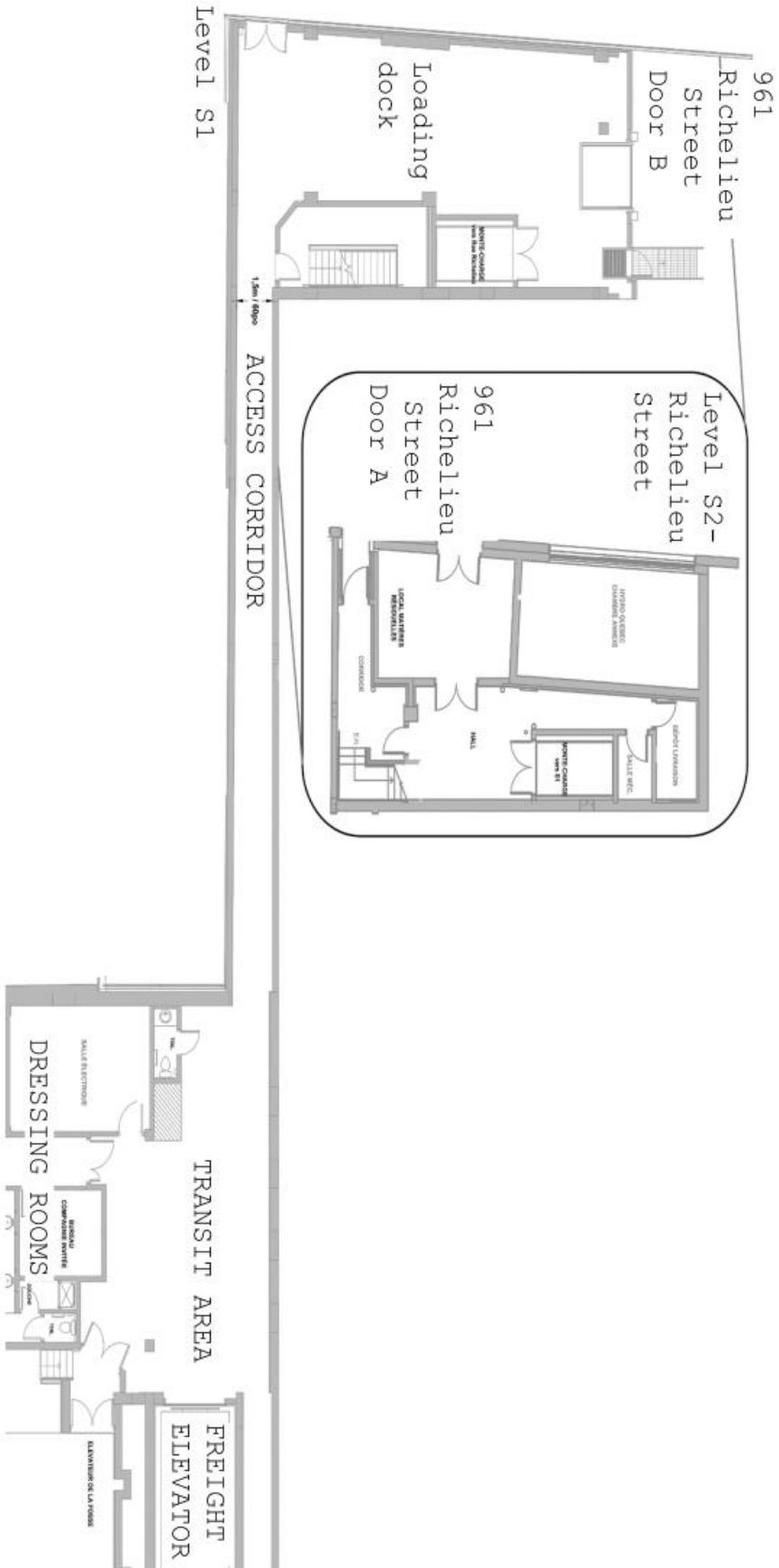
A door can be opened between Dressing rooms F and G to create one larger dressing room.



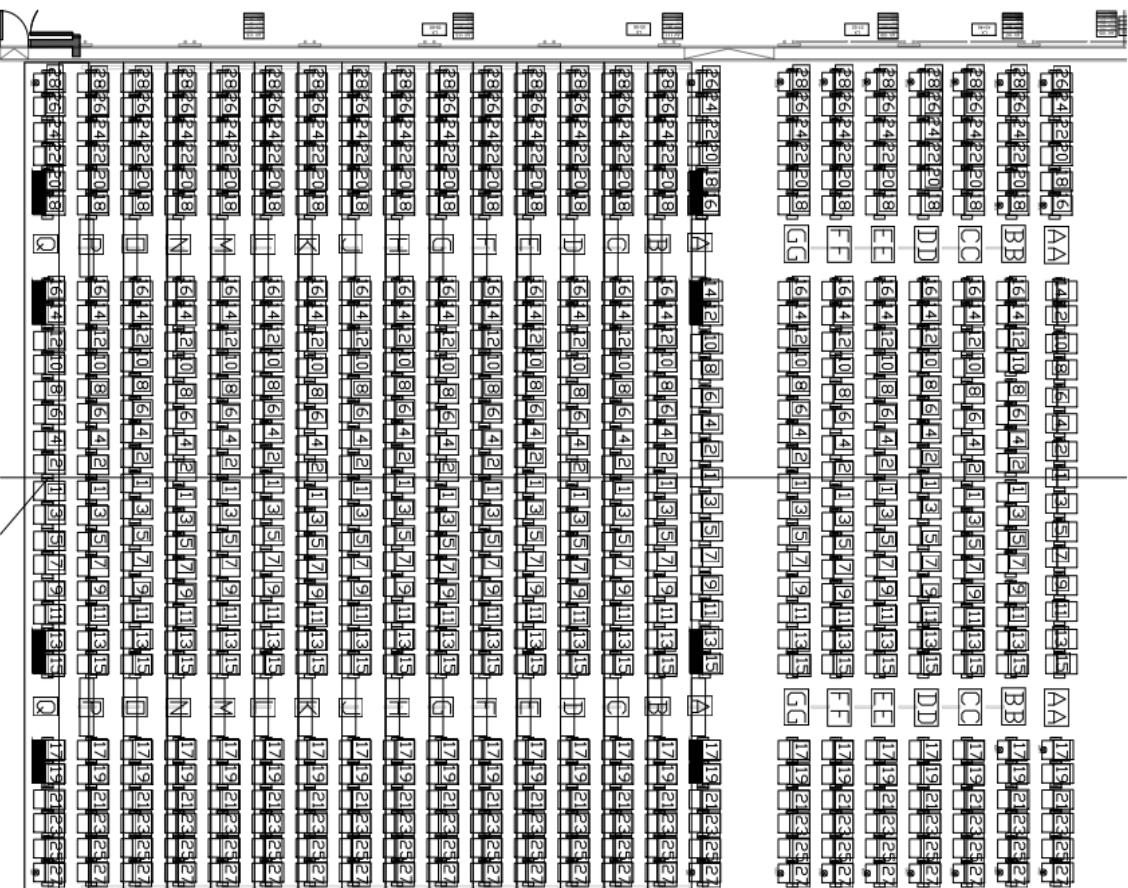
# APPENDIX 1: Loading dock plan



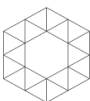
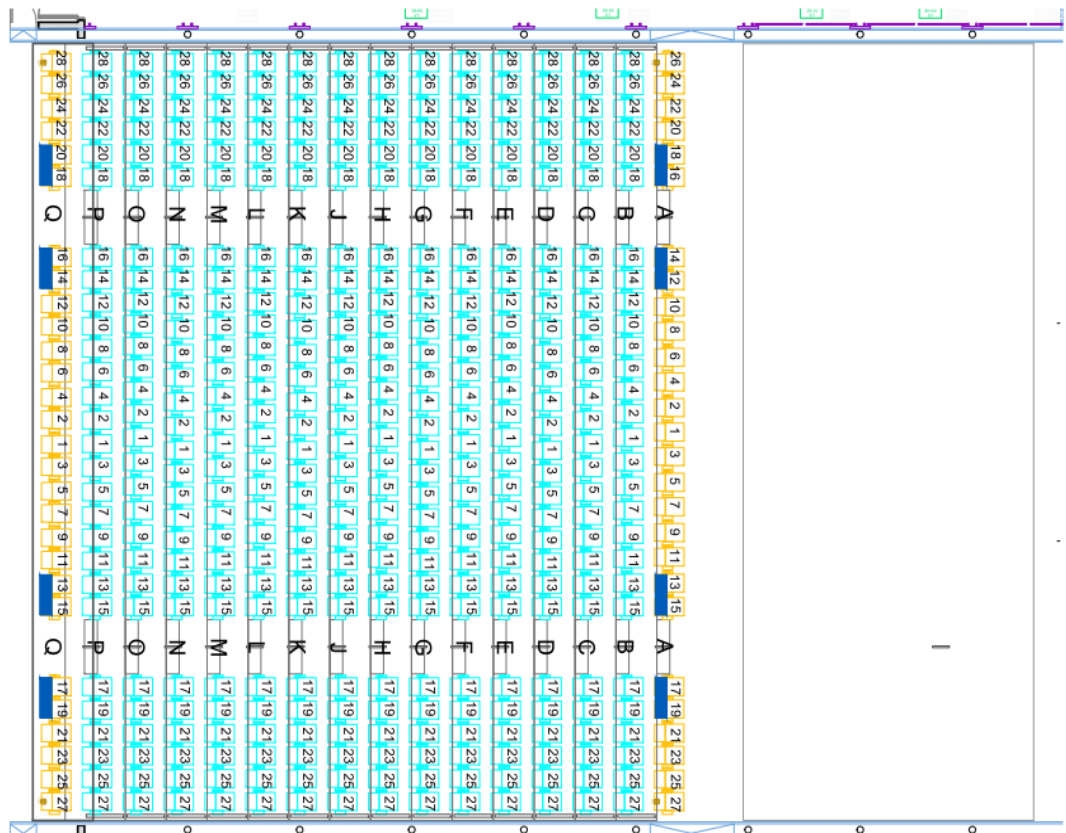
# APPENDIX 2: Plan for Level S1 and S2



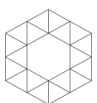
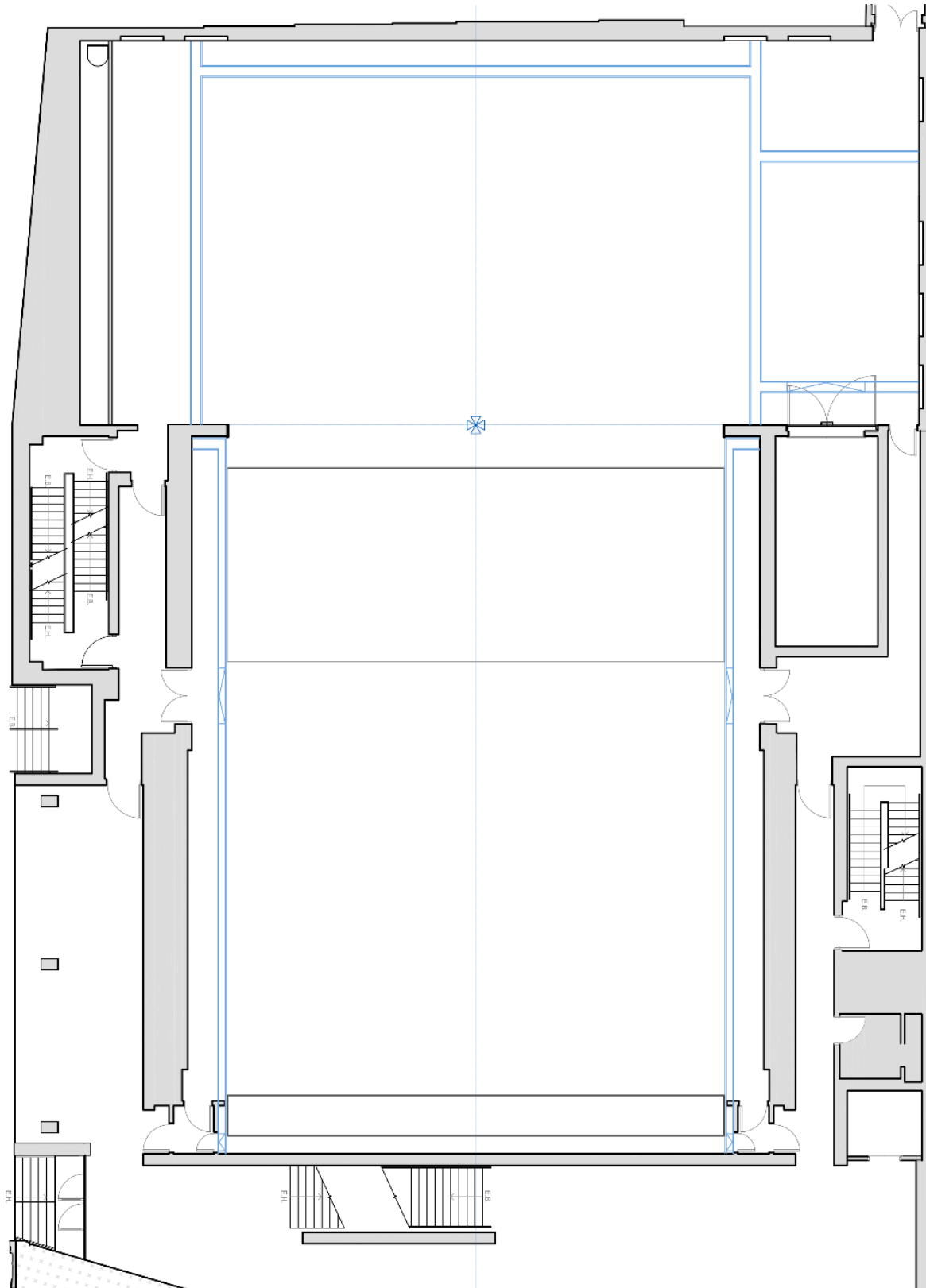
### APPENDIX 3.1: Seating plan (Large proscenium stage)



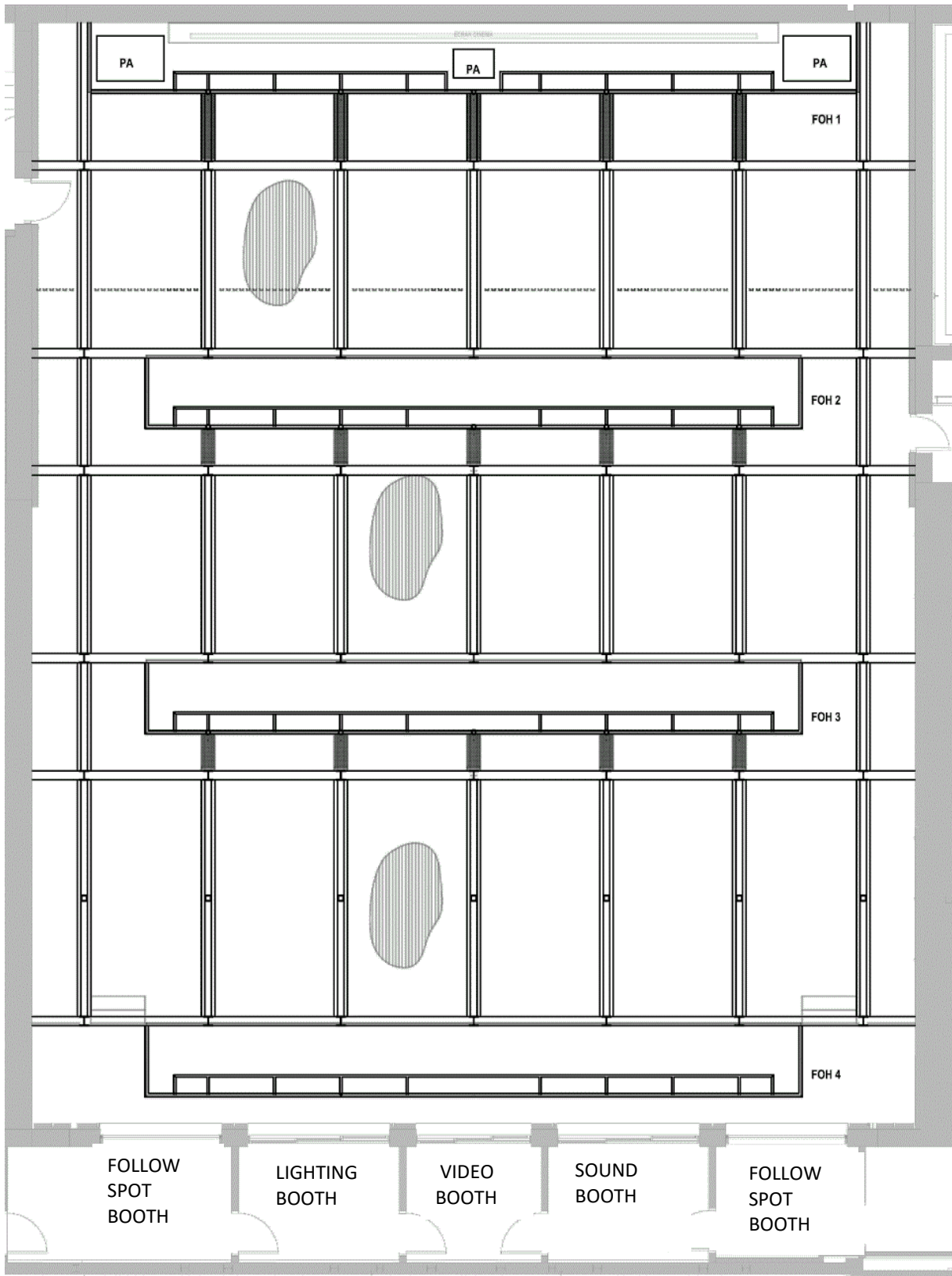
### APPENDIX 3.2: Seating Plan (Small proscenium with stage or orchestra pit)



## APPENDIX 4: Floor plan of stage and front of house, without bleachers

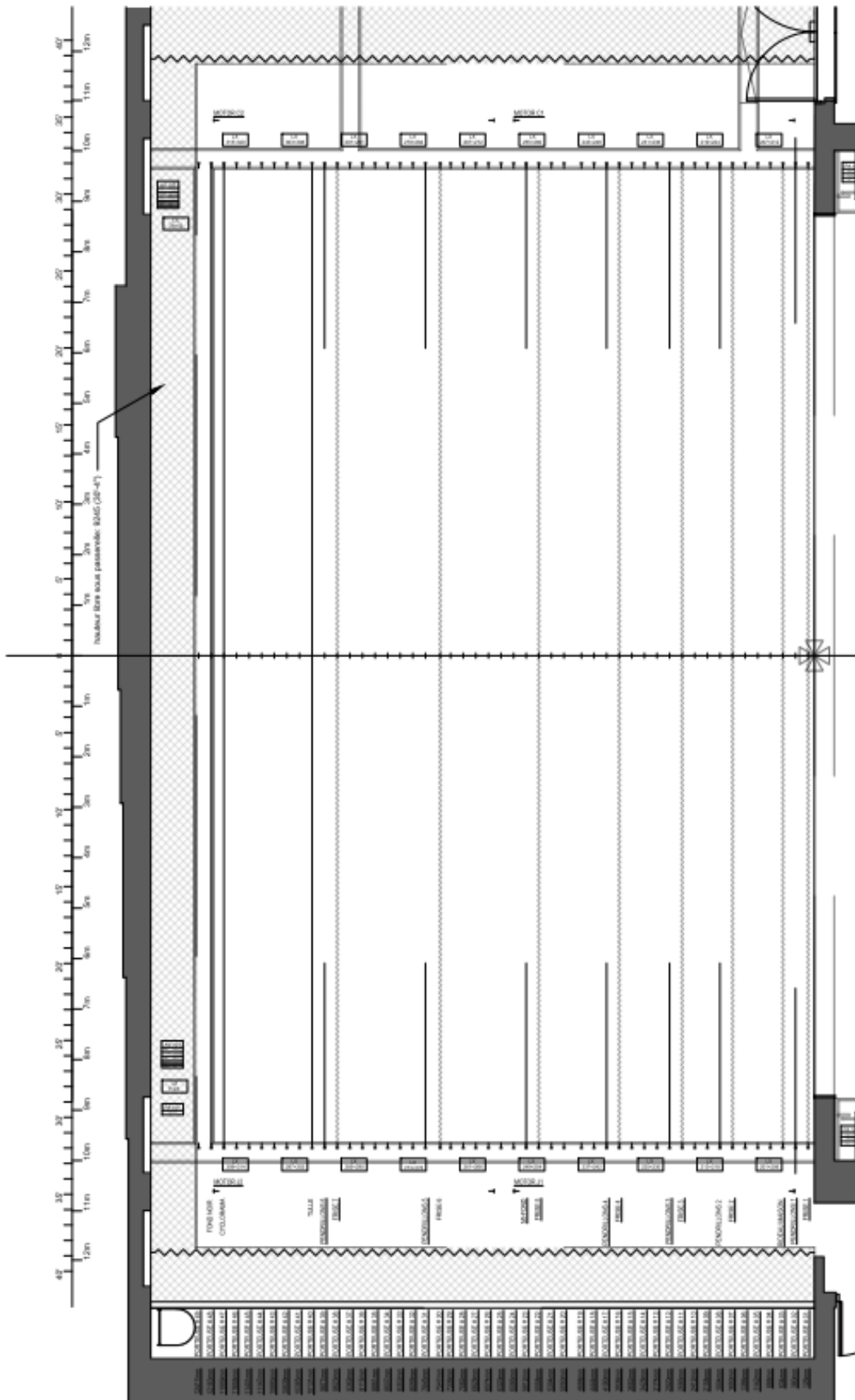


# APPENDIX 5: Front of house grid plan





# APPENDIX 6: House masking plot



## APPENDIX 6 (continued): Fly schedule

Dist.	Nom	Poids	Trim	Description	Notes
52'05"	FOH 3				
29'10"	FOH 2				
5'01"	FOH 1				
	SOUND			Full house kit	
	Screen				
0'05"	Batten 1			Border	With Pipe
1'03"	Batten 2			Legs	
2'01"	Batten 3			House Curtain	
2'11"	Batten 4				
3'09"	Batten 5				
4'07"	Batten 6				
5'05"	Batten 7			Border	
6'03"	Batten 8			Legs	
7'01"	Batten 9				
7'11"	Batten 10				
8'09"	Batten 11			Border	
9'07"	Batten 12			Legs	
10'05"	Batten 13				
11'03"	Batten 14				
12'01"	Batten 15				
12'11"	Batten 16			Border	
13'09"	Batten 17			Legs	
14'07"	Batten 18				
15'05"	Batten 19				
16'07"	Batten 20				
17'01"	Batten 21				
17'05"	Batten 22			Border	
19'01"	Batten 23			Traveller	
19'11"	Batten 24				
20'09"	Batten 25				
21'07"	Batten 26				
22'05"	Batten 27				
23'03"	Batten 28				
24'01"	Batten 29				
24'09"	Batten 30			Border	
25'09"	Batten 31			Legs	
26'07"	Batten 32				
27'05"	Batten 33				
28'03"	Batten 34				
29'01"	Batten 35				
29'11"	Batten 36				
30'09"	Batten 37				
31'07"	Batten 38			Border	
32'05"	Batten 39			Legs	
33'03"	Batten 40			Tulle	
34'01"	Batten 41				
34'11"	Batten 42				
35'09"	Batten 43				
36'07"	Batten 44				
37'05"	Batten 45				
38'03"	Batten 46				
39'01"	Batten 47			Grey PVC Cyc	
39'11"	Batten 48			Backdrop 60'	
40'09"	Batten 49				
Stage Right	Downstage				
	Upstage				
	Lateral				
Stage Left	Downstage				
	Upstage				
	Lateral				



# APPENDIX 7: Dressing room plan, Level S1

